



Unit 4/1 Rocklea Drive  
Port Melbourne Vic 3207

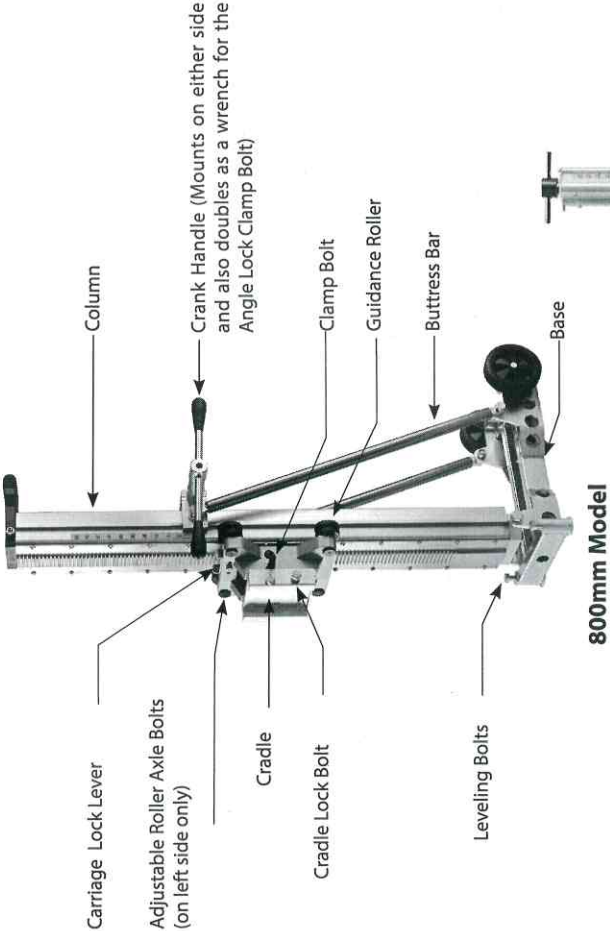
1300 109 108

[www.traxxcp.com.au](http://www.traxxcp.com.au)



**DS800, DS500, DS250  
DIAMOND CORE DRILL STANDS**

	800mm /1M Model	500mm/1M Model
Capacity w/o extension spacers (mm)	Ø350	Ø350
Max. Capacity with extension spacers (mm)	Ø800	Ø 500
Effective Stroke(mm)	760	690
Dimensions L x W x H (mm)	555 x 275 x 1035	425 x 245 x 1005
Net Weight(kg)	27.2	17.9



PS:

- 800mm /2M Model:**  
2m column (1760mm stroke)
- 800mm /2.5M Model:**  
2.5m column (2260mm stroke)
- 500mm /1.6M Model :**  
1.6m column (1390mm stroke)

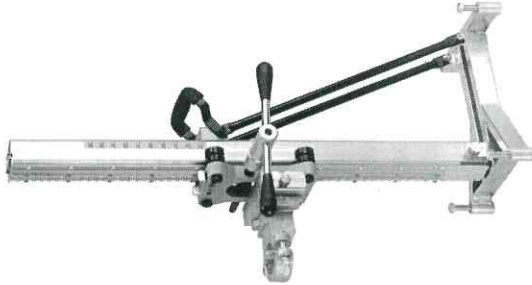


60mm clamp bracket for mounting hand-held drilling motors. Bolts directly to the standard mounting spacer (Fits all stand models except 170mm Model )

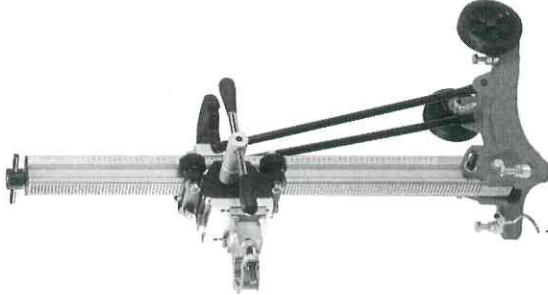
**500mm Model**

	250mm Model	250mm Aluminum Model	170mm Model
Capacity w/o extension spacers (mm)	Ø250	Ø250	Ø170
Max. Capacity with extension spacers (mm)	N/A	N/A	N/A
Effective Stroke(mm)	660	615	540
Dimensions L x W x H (mm)	390 x 248 x 970	360 x 240 x 960	330x200x815
Net Weight(kg)	14.1	13.5	9.3

**250mm Model**



**250 mm Aluminum Model**



**170mm Model**



Centering system

## EXTENSION SPACERS (Optional)





## DIAMOND CORE DRILL STAND

### Introduction:

This drill stand is designed to mount diamond core drilling motors by using a suitable mounting spacer. A standard 4 bolt mounting spacer is included with this stand. The drill stand guides the motor and diamond core bit so that it is possible to drill perfectly straight cuts in a safe and controlled manner. The stand is also able to slant so that holes may be cored at an angle as required. This stand must be securely fastened to the workpiece using a concrete anchor.

**WARNING: Do not attempt to use this stand if the mounting system does not fit perfectly to the drilling motor.**

## MOUNTING THE MOTOR TO THE DRILL STAND

### Rig-Mounted Type Motors:

If the drill motor is the 4 bolt rig-mounted type, the drill stand's mounting spacer must be bolted to the drill motor. The mounting tenon must fit securely in the slot in the back of the drill motor, then evenly tighten the four bolts.

This mounting spacer now acts as a secure and accurate coupling between the drill motor and the drill stand. The mounting spacer now fits in the dovetail in the stand's cradle and is secured by the cradle lock bolt.

### Hand-Held Type Motors:

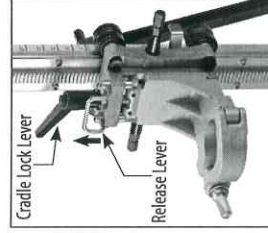
If the drill motor is the hand-held type, the clamp bracket must be used. The clamp bracket must first be bolted to the mounting spacer. Then the motor's gearcase collar must be mounted in the clamp bracket. Generally, the drill motor's side handle will need to be first removed. To insert, first loosen the clamp bracket using the crank handle as a wrench, then insert the motor, turn to the desired orientation and then securely fasten the clamp bolt.

Now the assembly may be fitted into the dovetail in the stand's cradle and the cradle lock bolt securely tightened.

### Stands with Quick-Release Cradle:

With these stands, the motor mounts into the clamp bracket in the same manner as "Hand-Held Type Motors" above. The bottom edge of the clamp bracket engages with a slot in the cradle and then snaps in place.

Once it is snapped in, it still needs to be fully tightened using the cradle lock lever. This is a ratchet type lever. When viewed from above, set the lever so that it is fully tight at about the 4 o'clock position. (So that it will not foul with the motor). It only needs about 45 degrees of swing to operate so it will release at about the 2 o'clock position.



**WARNING: Never attempt to operate without first fully tightening the cradle lock lever. Once snapped into the quick-release, the motor will be held, but it will not be tight. This could lead to a hazard.**

To release, first loosen the cradle lock lever. Then reach in and pull upwards on the release lever. Hold the motor with the other hand while doing this because the motor and clamp bracket will immediately come free from the cradle.

## EXTENSION SPACERS

For larger diameter core bits, extension spacers are required to maintain clearance between the bit and the stand. Extension spacers in sizes 45, 100, 150 and 200mm are optionally available. These may also be stacked together as needed to achieve the required distance.

These mount to the cradle using two bolts and both bolts must be securely tightened. The motor unit in turn mounts to the spacer

**WARNING: Always ensure that all mounting fasteners are securely tightened.**

**WARNING: Never attempt to drill unless the stand is fixed securely beyond any doubt.**

## DRILLING STAND FUNCTIONAL DESCRIPTION

### Fastening the drill rig

Once the desired position of the rig is determined, Use a concrete anchor to secure the rig.

Drill a suitable sized hole for the anchor with a hammer drill.

Drive in the anchor.

Use a long threaded rod with a large washer and nut to secure the base.

Before fully tightening the nut, use a spirit level to check if the stand is level. If needed, loosen the locknuts and adjust the four leveling bolts to achieve levelness. Then retighten the locknuts.

Now fully tighten the securing nut which affixes the base to the work surface.

**NOTE: We recommend using the optional Anchoring Plate for the most secure possible fixing of the base to the workpiece. Place the anchoring plate on the base with the threaded rod through the hole. Then add the washer and nut. Tighten securely.**

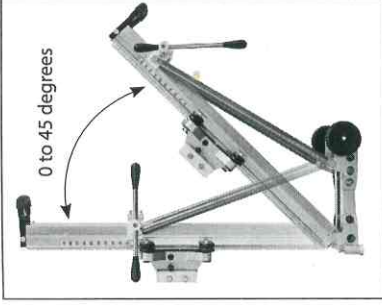
**Note: If mounting on a wall, it is usually more convenient to secure the stand with the motor head removed. Using the 19mm combination wrench, loosen the cradle lock bolt on the carriage to lift the motor head up and away. Once the stand is fixed, the motor head may be re-installed on the stand. Make sure to securely tighten the cradle lock bolt(s).**

**Note: If additional security is needed, use the jackscrew with an appropriate length bracing column.**

## ADJUSTING THE DRILLING ANGLE

The drilling angle can be tilted from 0 to 45 degrees. To adjust the angle, use the crank handle as a wrench and loosen the angle clamp bolt. Refer to the scale on the column indicating the angle. Adjust to the desired angle and tighten the clamp.

**CAUTION:** Do not overtighten the clamp. Only tighten the necessary amount to make the clamp secure. Overtightening could distort the column.



## CARRIAGE LOCK

Slide the carriage lock lever to the left to lock the carriage in place. Slide the lever to the right to release the carriage.

On some models, the carriage lock is a thumb screw on the right side of the carriage. Tighten to lock, loosen to release.



**CAUTION:** Hold the crank lever or motor head whenever releasing the carriage lock. It could slam down causing possible injury or damage to the bit or machine.

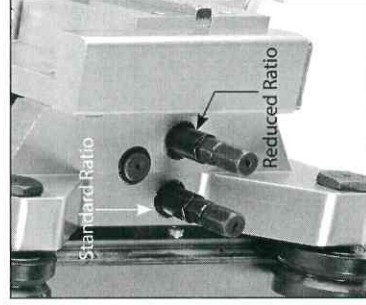
## REDUCTION GEARING

**On the larger size stands, there are two crank spindles:**

one for standard cranking and one for reduced gear ratio cranking.

The reduced gear ratio allows the operator to drill with greatly reduced effort when using large diameter core bits.

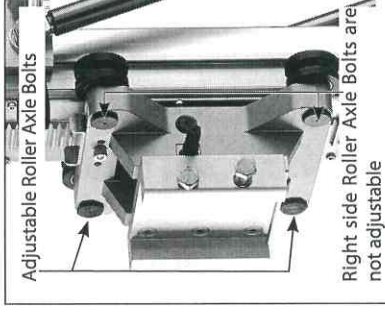
To switch from standard to reduced gear ratio cranking, simply remove the crank handle from the main spindle and connect to the forward spindle on the left side.



## ADJUSTING THE DRILLING STAND GUIDANCE

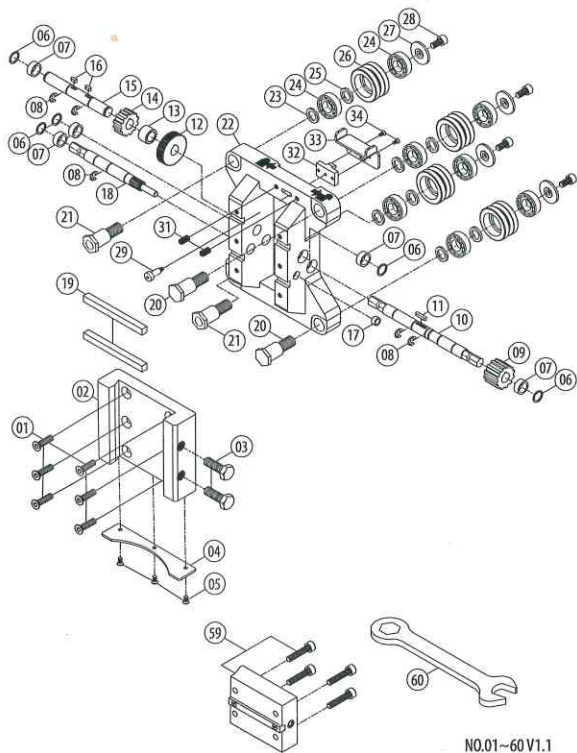
Loose guidance will cause the bit to run out-of-true and result in poor performance, sticking and possible damage to the bit. If the rollers can be turned by hand with the carriage locked, they are too loose.

To adjust the guidance, the two guide rollers on the left side are on eccentric shafts. Turn the eccentric roller axle bolt until the clearance is taken up on each roller in turn. Turn just enough so that the roller cannot be turned by hand. Now test the tightness of the carriage by cranking it up and down. There should be no free-play, yet no binding throughout its travel.



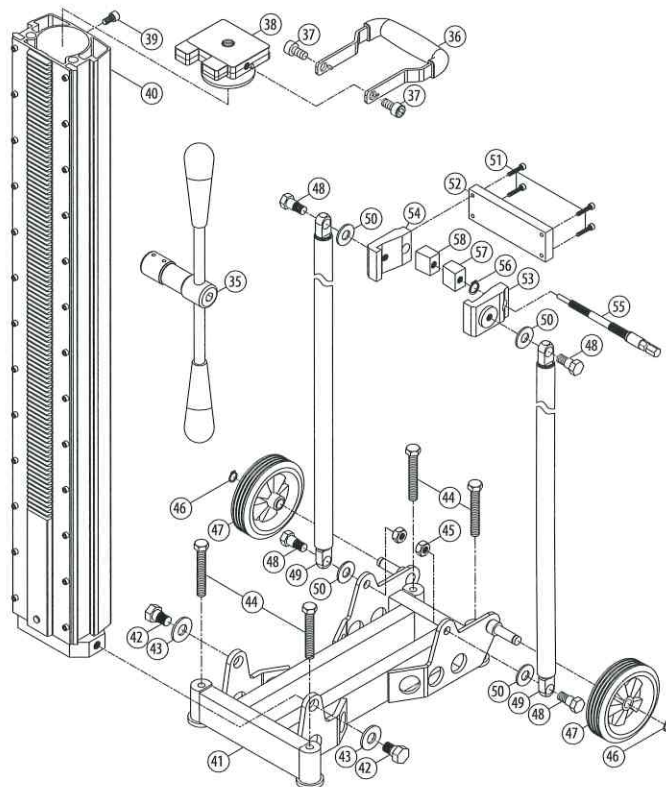


Exploded View (800mm/1M Model)

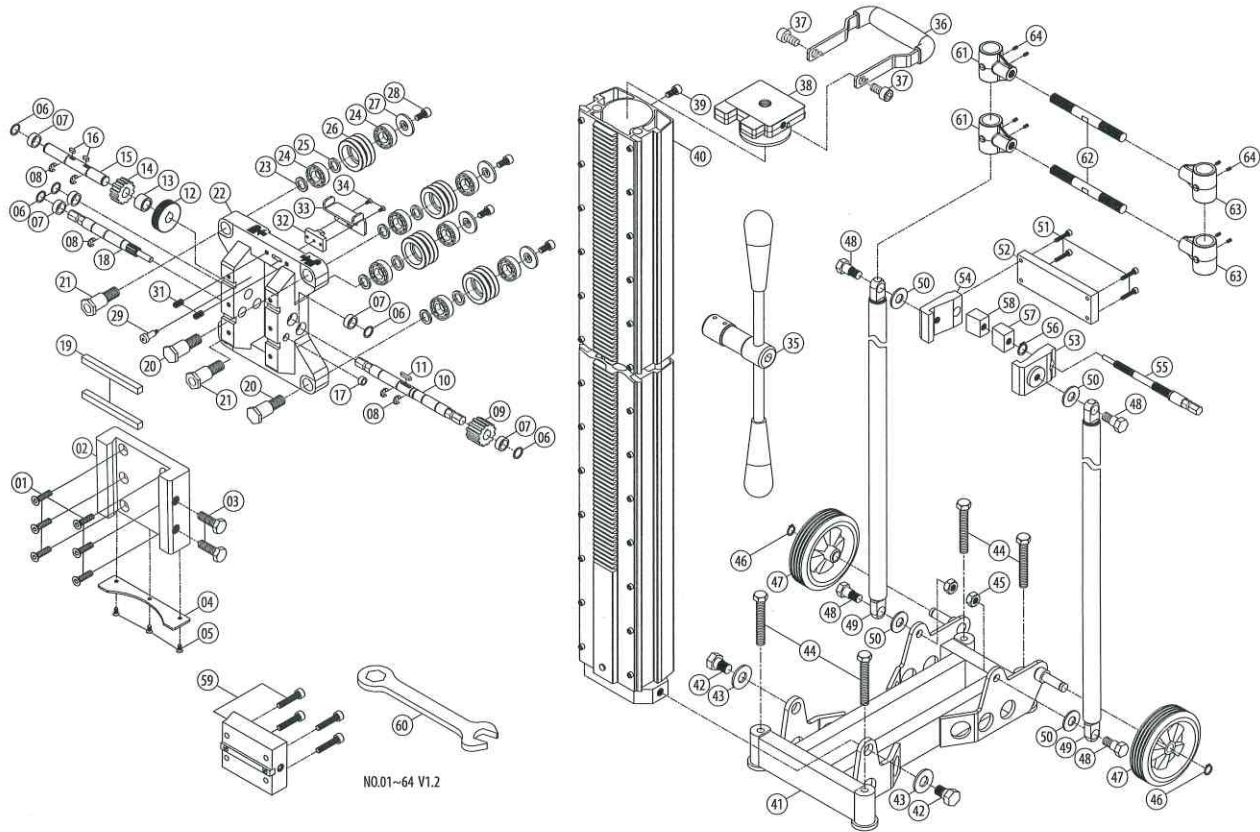


Parts List (800mm /1M Model)

NO.	Parts Name	QTY	NO.	Parts Name	QTY
1	FLAT HEAD SCREW M8x30	6	31	DETENT UNIT M8	2
2	CRADLE	1	32	CARRIAGE LOCK M2.5	1
3	CRADLE LOCK BOLT M12 x 40	2	33	CARRIAGE LOCK LEVER	1
4	CRADLE PLATE	1	34	SCREW M4 x 8	2
5	FLAT HEAD SCREW M5 x 12	3	35	CRANK HANDLE	1
6	EXTERNAL CIRCLIP IS-15	5	36	FRONT HANDLE	1
7	BUSHING Ø15 x Ø20 x 10	5	37	SCREW M12 x 16	2
8	E CLIP E-12	5	38	COLUMN CAP	1
9	CRANK GEAR M2.5 x 121 x 25L	1	39	SCREW M5 x 10	1
10	CRANK PINION	1	40	COLUMN	1
11	WOODRUFF KEY 4 x 4 x 20	1	41	BASE	1
12	REDUCTION GEAR M1.0 x 46T	1	42	SHOULDER BOLT M14 x P2.0	2
13	SPACER Ø15 x Ø22 x 15	1	43	FLAT WASHER 5/8 x Ø30 x 3	2
14	INTERMEDIATE GEAR M2.5 x 121 x 15L	1	44	SCREW M12 x 75	4
15	INTERMEDIATE SHAFT	1	45	NUT-NYLOCK M12 x P1.75 x 19	2
16	WOODRUFF KEY 4 x 4 x 10	2	46	EXTERNAL CIRCLIP S-13	2
17	BUSHING Ø8 x Ø12 x 6	1	47	WHEEL	2
18	REDUCTION CRANK PINION M1.0 x 11T	1	48	SHOULDER BOLT M12 x P1.75	4
19	MOUNTING TENON 10 x 10 x 115	2	49	BUTTRESS BAR	2
20	AXLE SHAFT	2	50	FLAT WASHER Ø14 x Ø32 x 2.5	4
21	ECCENTRIC SHAFT	2	51	SCREW M5 x 25	4
22	CARRIAGE	1	52	CLAMP PLATE	1
23	AXLE SPACER C Ø15 x Ø22 x 3.5	4	53	CLAMP CLAW-LEFT Ø15.5	1
24	BALL BEARING 6202-2RS	8	54	CLAMP CLAW-RIGHT Ø6.5	1
25	AXLE SPACER B Ø15 x Ø22 x 3	4	55	ANGLE CLAMP BOLT	1
26	GUIDE ROLLER	4	56	EXTERNAL CIRCLIP S-15	1
27	AXLE SPACER A Ø8.5 x Ø34 x 5	4	57	CLAMP WEDGE-LEFT M12 x P1.5	1
28	SCREW M8 x 16	4	58	CLAMP WEDGE-RIGHT M10 x P1.5	1
29	SCREW M5	1	59	MOUNTING SPACER	1
30	N/A	-	60	WRENCH M19	1



Exploded View (800mm/2M Model)

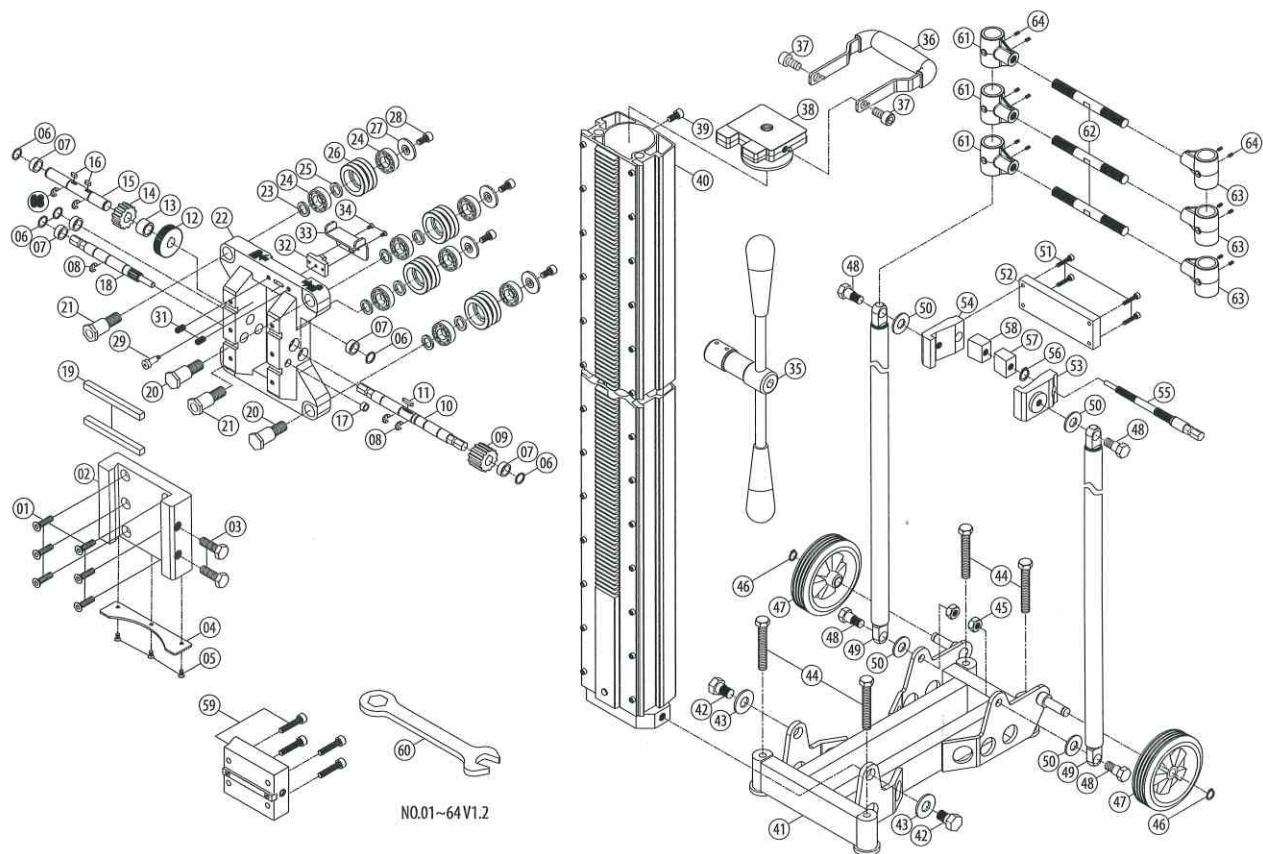


Parts List (800mm /2M Model)

NO.	Parts Name	QTY	NO.	Parts Name	QTY
1	FLAT HEAD SCREW M8x30	6	33	CARRIAGE LOCK LEVER	1
2	CRADLE	1	34	SCREW M4x8	2
3	CRADLE LOCK BOLT M12x40	2	35	CRANK HANDLE	1
4	CRADLE PLATE	1	36	FRONT HANDLE	1
5	FLAT HEAD SCREW M5x12	3	37	SCREW M12x16	2
6	EXTERNAL CIRCLIP IS-15	5	38	COLUMN CAP	1
7	BUSHING Ø15xØ20x10	5	39	SCREW M5x10	1
8	E CLIP E-12	5	40	COLUMN	1
9	CRANK GEAR M2.5x12T x 25L	1	41	BASE	1
10	CRANK PINION	1	42	SHOULDER BOLT M14xP2.0	2
11	WOODRUFF KEY 4x4x20	1	43	FLAT WASHER 5/8xØ30x3	2
12	REDUCTION GEAR M1.0x46T	1	44	SCREW M12x75	4
13	SPACER Ø15xØ22x15	1	45	NUT-NYLOCK M12xP1.75x19	2
14	INTERMEDIATE GEAR M2.5x12T x15L	1	46	EXTERNAL CIRCLIP S-13	2
15	INTERMEDIATE SHAFT	1	47	WHEEL	2
16	WOODRUFF KEY 4x4x10	2	48	SHOULDER BOLT M12xP1.75	4
17	BUSHING Ø8xØ12x6	1	49	BUTTRESS BAR	2
18	REDUCTION CRANK PINION M1.0x11T	1	50	FLAT WASHER Ø14xØ32x2.5	4
19	MOUNTING TENON 10x10x115	2	51	SCREW M5x25	4
20	AXLE SHAFT	2	52	CLAMP PLATE	1
21	ECCENTRIC SHAFT	2	53	CLAMP CLAW-LEFT Ø15.5	1
22	CARRIAGE	1	54	CLAMP CLAW-RIGHT Ø6.5	1
23	AXLE SPACER C Ø15xØ22x3.5	4	55	ANGLE CLAMP BOLT	1
24	BALL BEARING 6202-2RS	8	56	EXTERNAL CIRCLIP S-15	1
25	AXLE SPACER B Ø15xØ22x3	4	57	CLAMP WEDGE-LEFT M12xP1.5	1
26	GUIDE ROLLER	4	58	CLAMP WEDGE-RIGHT M10xP1.5	1
27	AXLE SPACER A Ø8.5xØ34x5	4	59	MOUNTING SPACER	1
28	SCREW M8x16	4	60	WRENCH M19	1
29	SCREW M5	1	61	BRACING COLLAR-L	2
30	N/A	-	62	TURNBUCKLE SHAFT M14xP2.0x142L	2
31	DETENT UNIT M8	2	63	BRACING COLLAR-R	2
32	CARRIAGE LOCK M2.5	1	64	SOCKET SET SCREW M5x6	8



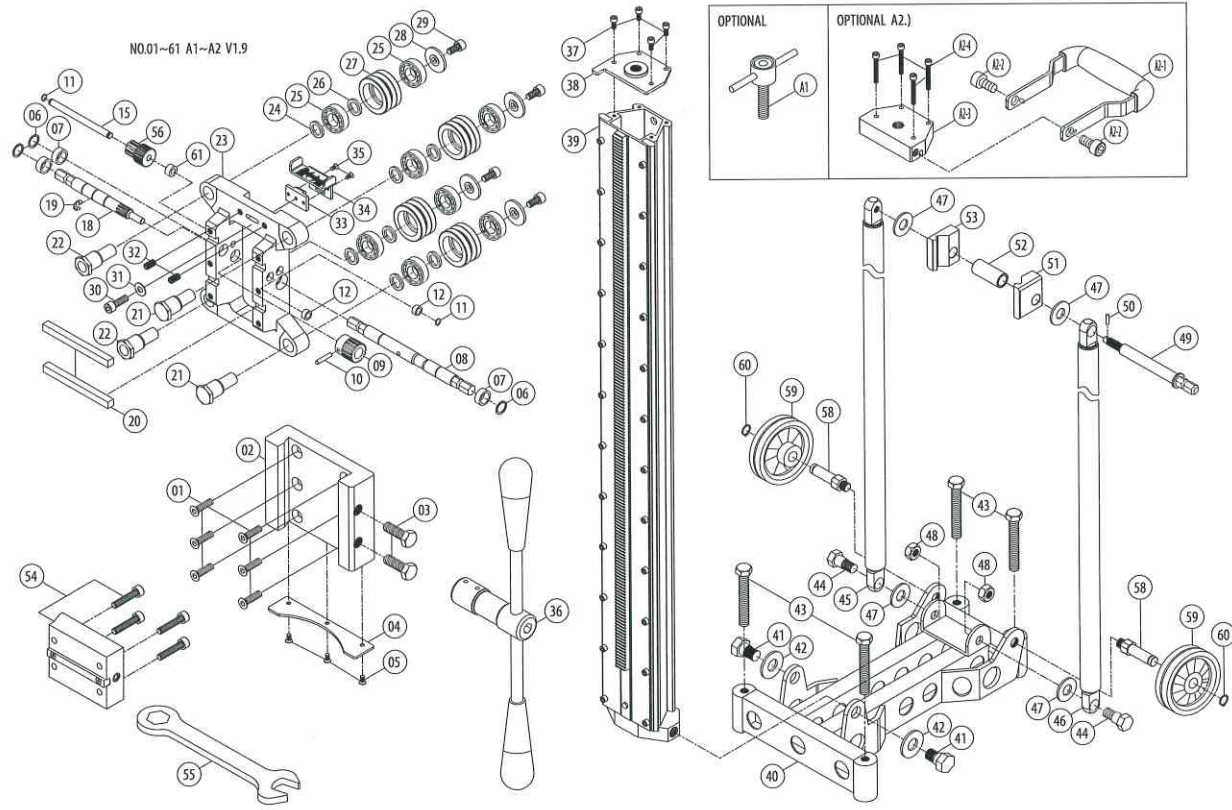
Exploded View (800mm/2.5M Model)



Parts List (800mm /2.5M Model)

NO.	Parts Name	QTY	NO.	Parts Name	QTY
1	FLAT HEAD SCREW M8 x 30	6	33	CARRIAGE LOCK LEVER	1
2	CRADLE	1	34	SCREW M4 x 8	2
3	CRADLE LOCK BOLT M12 x 40	2	35	CRANK HANDLE	1
4	CRADLE PLATE	1	36	FRONT HANDLE	1
5	FLAT HEAD SCREW M5 x 12	3	37	SCREW M12 x 16	2
6	EXTERNAL CIRCLIP IS-15	5	38	COLUMN CAP	1
7	BUSHING Ø15 x Ø20 x 10	5	39	SCREW M5 x 10	1
8	E CLIP E-12	5	40	COLUMN	1
9	CRANK GEAR M2.5 x 121 x 25L	1	41	BASE	1
10	CRANK PINION	1	42	SHOULDER BOLT M14 x P2.0	2
11	WOODRUFF KEY 4 x 4 x 20	1	43	FLAT WASHER 5/8 x Ø30 x 3	2
12	REDUCTION GEAR M1.0 x 46T	1	44	SCREW M12 x 75	4
13	SPACER Ø15 x Ø22 x 15	1	45	NUT-NTLOCK M12 x P1.75 x 19	2
14	INTERMEDIATE GEAR M2.5 x 121 x 15L	1	46	EXTERNAL CIRCLIP S-13	2
15	INTERMEDIATE SHAFT	1	47	WHEEL	2
16	WOODRUFF KEY 4 x 4 x 10	2	48	SHOULDER BOLT M12 x P1.75	4
17	BUSHING Ø8 x Ø12 x 6	1	49	BUTTRESS BAR	2
18	REDUCTION CRANK PINION M1.0 x 11T	1	50	FLAT WASHER Ø14 x Ø32 x 2.5	4
19	MOUNTING TENGON 10 x 10 x 115	2	51	SCREW M5 x 25	4
20	AXLE SHAFT	2	52	CLAMP PLATE	1
21	ECCENTRIC SHAFT	2	53	CLAMP CLAW-LEFT Ø15.5	1
22	CARRIAGE	1	54	CLAMP CLAW-RIGHT Ø6.5	1
23	AXLE SPACER C Ø15 x Ø22 x 3.5	4	55	ANGLE CLAMP BOLT	1
24	BALL BEARING 6202-2RS	8	56	EXTERNAL CIRCLIP S-15	1
25	AXLE SPACER B Ø15 x Ø22 x 3	4	57	CLAMP WEDGE-LEFT M12 x P1.5	1
26	GUIDE ROLLER	4	58	CLAMP WEDGE-RIGHT M10 x P1.5	1
27	AXLE SPACER A Ø8.5 x Ø34 x 5	4	59	MOUNTING SPACER	1
28	SCREW M8 x 16	4	60	WRENCH M19	1
29	SCREW M5	1	61	BRACING COLLAR-L	3
30	N/A	-	62	TURNBUCKLE SHAFT M14 x P2.0 x 142L	3
31	DETENT UNIT M8	2	63	BRACING COLLAR-R	3
32	CARRIAGE LOCK M2.5	1	64	SOCKET SET SCREW M5 x 6	12

# Exploded View (500mm/1M Model)

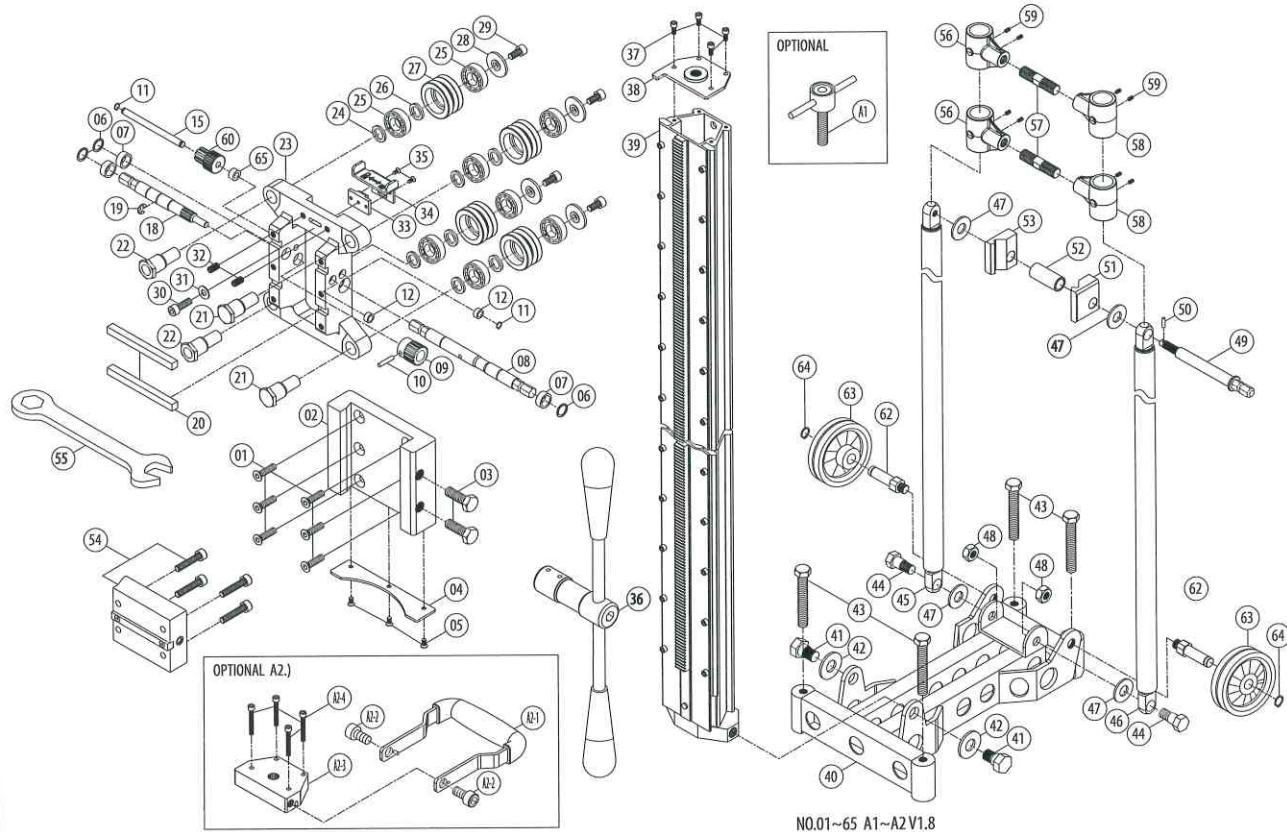


# Parts List (500mm/1M Model)

NO.	Parts Name	QTY	NO.	Parts Name	QTY
1	FLAT HEAD SCREW M8 x 30	6	36	CRANK HANDLE	1
2	CRADLE	1	37	SOCKET CAP SCREW M5 x 10	4
3	CRADLE LOCK BOLT M12 x 40	2	38	COLUMN CAP	1
4	CRADLE PLATE	1	39	COLUMN	1
5	FLAT HEAD SCREW M5 x 12	3	40	BASE	1
6	EXTERNAL CIRCLIP IS-15	3	41	SHOULDER BOLT M14 x P2.0	2
7	BUSHING Ø15 x Ø20 x 10	3	42	FLAT WASHER 5/8 x Ø30 x 3	2
8	CRANK PINION	1	43	SCREW M12 x 75	4
9	CRANK GEAR M1.5 x 16T	1	44	SHOULDER BOLT M12 x P1.75	2
10	ROLL PIN Ø5 x 25	1	45	BUTRESS BAR-LEFT	1
11	EXTERNAL CIRCLIP S-8	4	46	BUTRESS BAR-RIGHT	1
12	BUSHING Ø8 x Ø12 x 6	2	47	FLAT WASHER Ø14 x Ø32 x 2.5	4
13-14	N/A	-	48	NUT M12 x P1.75 x 19	2
15	INTERMEDIATE SHAFT	1	49	ANGLE LOCK	1
16-17	N/A	-	50	ROLL PIN Ø4 x 25	1
18	REDUCTION CRANK PINION M1.0 x 11T	1	51	CLAMP CLAW-LEFT	1
19	E CLIP E-12	1	52	SPACER Ø14.1 x Ø19.5 x 45.2	1
20	MOUNTING TENON 10 x 10 x 115	2	53	CLAMP CLAW-RIGHT	1
21	AXLE SHAFT	2	54	MOUNTING SPACER	1
22	ECCENTRIC SHAFT	2	55	WRENCH M19	1
23	CARRIAGE	1	56	REDUCTION GEAR SET	1
24	AXLE SPACER C Ø15 x Ø22 x 3.5	4	57	N/A	-
25	BALL BEARING 6202-2RS	8	58	ROLLER AXLE	2
26	AXLE SPACER B Ø15 x Ø22 x 3	4	59	WHEEL	2
27	GUIDE ROLLER	4	60	EXTERNAL CIRCLIP S-13	2
28	AXLE SPACER A Ø8.5 x Ø34 x 5	4	61	SPACER	1
29	SCREW M8 x 16	4	A1	JACK SCREW (OPTIONAL)	1
30	SCREW M5 x 20	1	A2	AUXILIARY HANDLE SET (OPTIONAL)	1
31	FLAT WASHER Ø5 x Ø12 x 1	1	A2-1	FRONT HANDLE	1
32	DETENT UNIT M8 x 16.75 (17) x P1.25	2	A2-2	SCREW M12 x 16	2
33	CARRIAGE LOCK M1.5	1	A2-3	COLUMN CAP	1
34	CARRIAGE LOCK LEVER	1	A2-4	SCREW M5 x 35	4
35	SCREW M4 x 6	2			



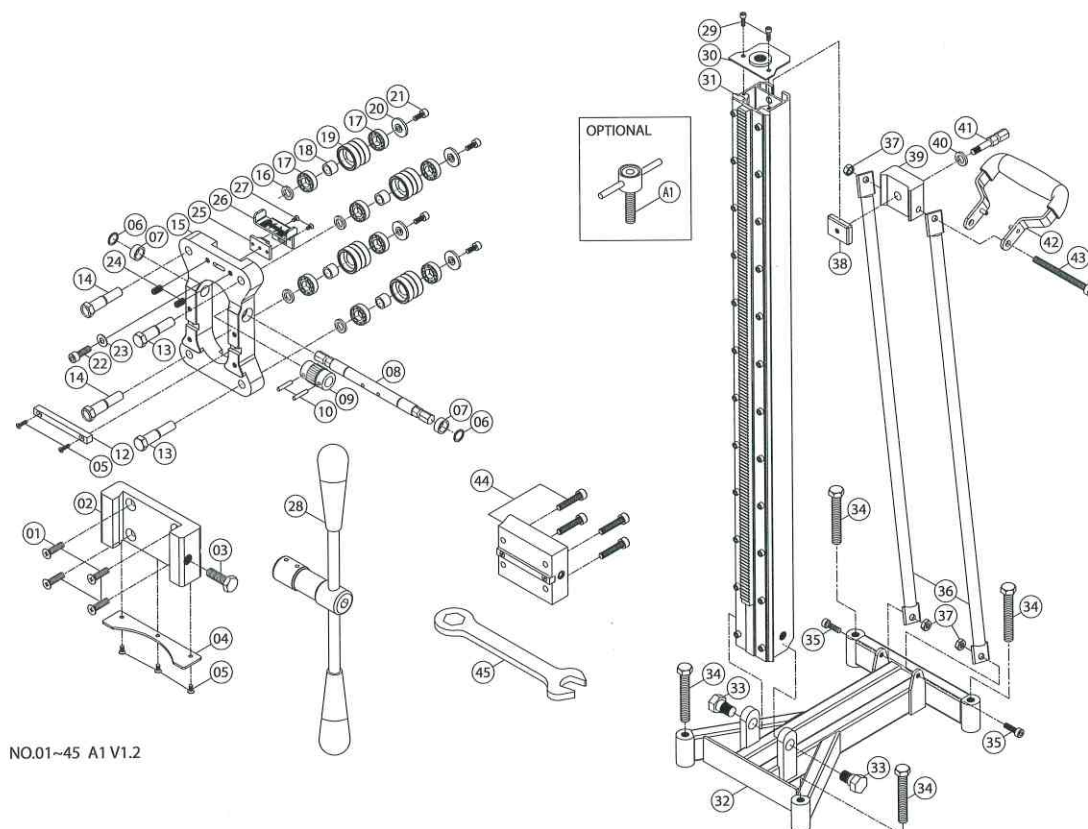
Exploded View (500mm/1.6M Model)



Parts List (500mm/1.6M Model)

NO.	Parts Name	QTY	NO.	Parts Name	QTY
1	FLAT HEAD SCREW M8 x 30	6	38	COLUMN CAP	1
2	CRADLE	1	39	COLUMN	1
3	CRADLE LOCK BOLT M12 x 40	2	40	BASE	1
4	CRADLE PLATE	1	41	SHOULDER BOLT M14 x P2.0	2
5	FLAT HEAD SCREW M5 x 12	3	42	FLAT WASHER 5/8 x Ø30 x 3	2
6	EXTERNAL CIRCLIP IS-15	3	43	SCREW M12 x 75	4
7	BUSHING Ø15 x Ø20 x 10	3	44	SHOULDER BOLT M12 x P1.75	2
8	CRANK PINION	1	45	BUTRESS BAR-LEFT	1
9	CRANK GEAR M1.5 x 16T	1	46	BUTRESS BAR-RIGHT	1
10	ROLL PIN Ø5 x 25	1	47	FLAT WASHER Ø14 x Ø32 x 2.5	4
11	EXTERNAL CIRCLIP S-8	4	48	NUT-NYLOCK M12 x P1.75 x 19	2
12	BUSHING Ø8 x Ø12 x 6	2	49	ANGLE LOCK	1
13~14	N/A	-	50	ROLL PIN Ø4 x 25	1
15	INTERMEDIATE SHAFT	1	51	CLAMP CLAW-LEFT	1
16~17	N/A	-	52	SPACER Ø14.1 x Ø19.5 x 45.2	1
18	REDUCTION CRANK PINION M1.0 x 11T	1	53	CLAMP CLAW-RIGHT	1
19	ECLIP E-12	1	54	MOUNTING SPACER	1
20	MOUNTING TENON 10 x 10 x 115	2	55	WRENCH M19	1
21	ROLLER AXLE BOLT	2	56	BRACING COLLAR-L	2
22	ECCENTRIC ROLLER AXLE BOLT	2	57	TURNBUCKLE SHAFT M14 x P2.0 x 60L	2
23	CARRIAGE	1	58	BRACING COLLAR-R	2
24	AXLE SPACER C Ø15 x Ø22 x 3.5	4	59	SOCKET SET SCREW M5 x 6	8
25	BALL BEARING 6202-2RS	8	60	REDUCTION GEAR SET	1
26	AXLE SPACER B Ø15 x Ø22 x 3	4	61	N/A	-
27	GUIDE ROLLER	4	62	ROLLER AXLE	2
28	AXLE SPACER A Ø8.5 x Ø34 x 5	4	63	WHEEL	2
29	SCREW M8 x 16	4	64	EXTERNAL CIRCLIP S-13	2
30	SCREW M5 x 20	1	64	SPACER	1
31	FLAT WASHER Ø5 x Ø12 x 1	1	A1	JACK SCREW (OPTIONAL)	1
32	DETENT UNIT M8 x 16.75(17) x P1.25	2	A2	AUXILIARY HANDLE SET (OPTIONAL)	1
33	CARRIAGE LOCK M1.5	1	A2-1	FRONT HANDLE	1
34	CARRIAGE LOCK LEVER	1	A2-2	SCREW M12 x 16	2
35	SCREW M4 x 6	2	A2-3	COLUMN CAP	1
36	CRANK HANDLE	1	A2-4	SCREW M5 x 35	4
37	SOCKET CAP SCREW M5 x 10	4			

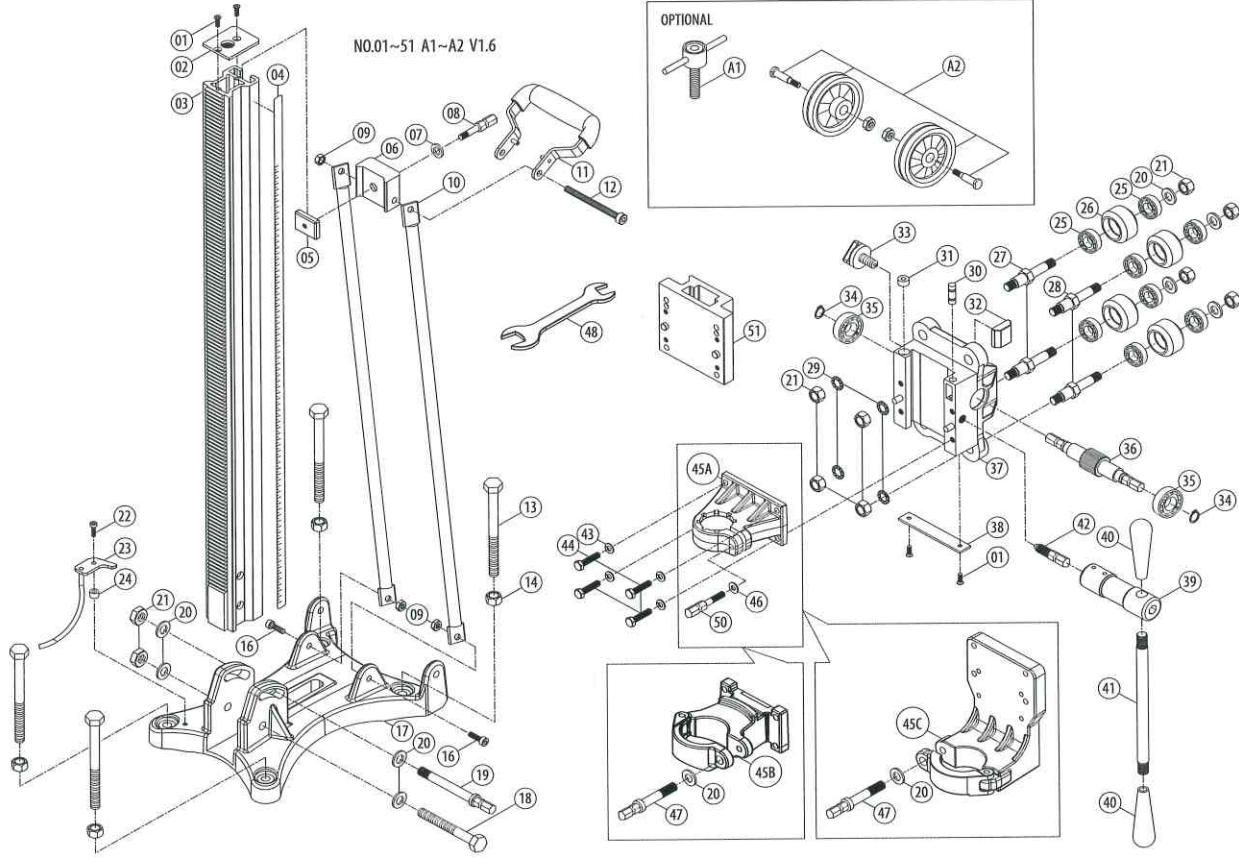
### Exploded View (250mm Model)



### Parts List (250mm Model)

NO.	Parts Name	Q'TY
1	FLAT HEAD SCREW M8 x 30	4
2	CRADLE	1
3	CRADLE LOCK BOLT M12 x 40	1
4	CRADLE PLATE	1
5	FLAT HEAD SCREW M5 x 12	5
6	EXTERNAL CIRCLIP IS-15	2
7	BUSHING Ø15 x Ø20 x 10	2
8	CRANK PINION	1
9	CRANK GEAR M1.5 x 16T	1
10	ROLL PIN Ø5 x 25	2
11	N/A	-
12	MOUNTING TENON 10 x 10 x 100	1
13	AXLE SHAFT	2
14	ECCENTRIC SHAFT	2
15	CARRIAGE	1
16	AXLE SPACER B Ø12 x Ø19 x 3	4
17	BALL BEARING 6001-2RS	8
18	AXLE SPACER C Ø12 x Ø17 x 12	4
19	GUIDE ROLLER Ø17 x Ø36 x 28	4
20	AXLE SPACER A Ø6.5 x Ø27 x 4	4
21	SCREW M6 x 16	4
22	SCREW M5 x 20	1
23	FLAT WASHER Ø5 x Ø12 x 1	1
24	DETENT UNIT M8 x 16,75(17) x P1,25	2
25	CARRIAGE LOCK M1.5	1
26	CARRIAGE LOCK LEVER	1
27	SCREW M4 x 6	2
28	CRANK HANDLE	1
29	SCREW M5 x 10	2
30	COLUMN CAP	1
31	COLUMN	1
32	BASE	1
33	SHOULDER BOLT M14 x P2,0	2
34	SCREW M12 x 75	4
35	SOCKET CAP BOLT M8 x 16	2
36	BUTRESS BAR	2
37	NUT-NYLOCK M8	3
38	LOCK PLATE 39.5 x 39.5 x 10 x M8	1
39	BUTTRESS LOCK	1
40	FLAT WASHER 5/16" x Ø17 x 1.5	1
41	ANGLE LOCK CLAMP	1
42	HANDLE	1
43	SOCKET CAP BOLT M8 x 85	1
44	MOUNTING SPACER	1
45	WRENCH M19	1
A1	JACK SCREW (OPTIONAL)	1

Exploded View (250mm Aluminum Model )

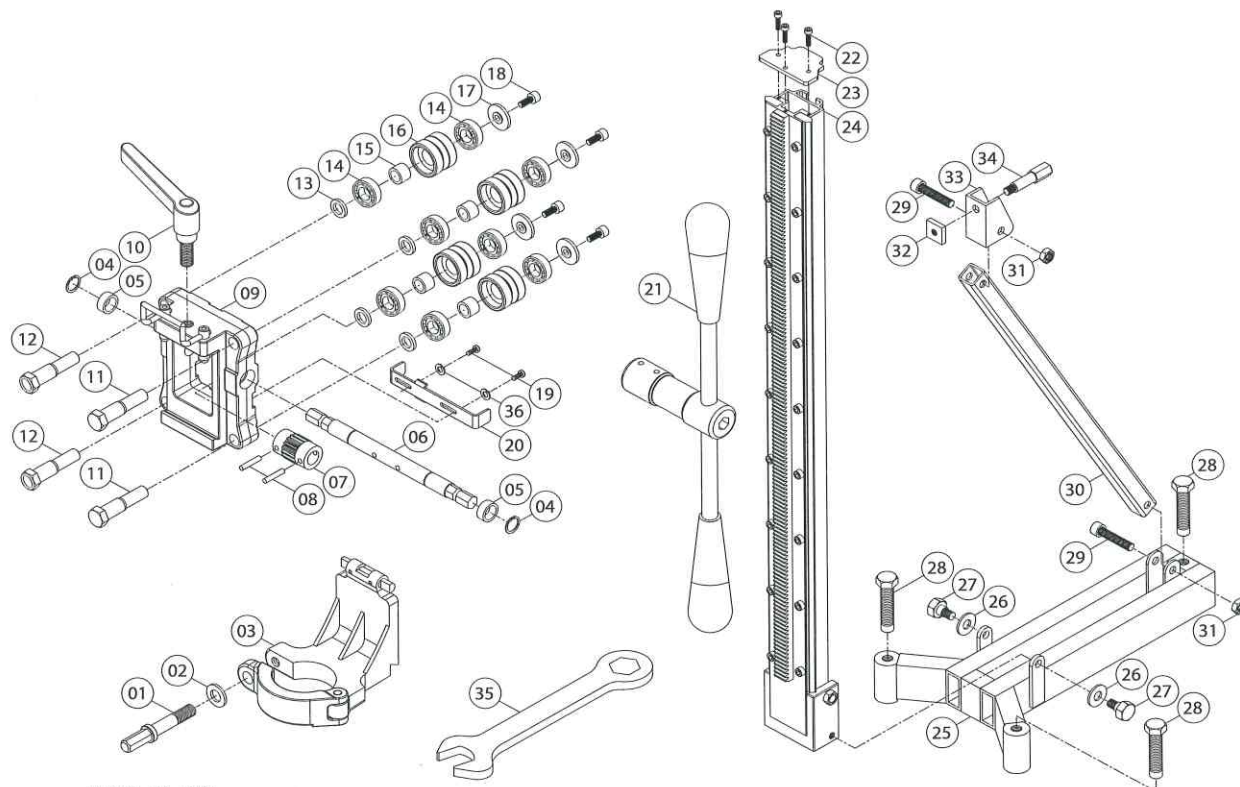


Parts List (250mm Aluminum Model )

NO.	Parts Name	QTY
1	SCREW M5 x 10	4
2	COLUMN CAP PLATE	1
3	COLUMN	1
4	MITER SCALE	1
5	LOCK PLATE 30 x 39.5 x 10 x M8	1
6	BUTTRESS LOCK	1
7	FLAT WASHER Ø5/16" x Ø17 x 1.5	1
8	ANGLE LOCK CLAMP	1
9	NUT-NYLOCK M8	3
10	BUTRESS BAR	2
11	HANDLE	1
12	SCREW M8 x 85	1
13	SCREW M12 x P1.75 x 75L	4
14	NUT M12 x P1.75 x 19	4
15	N/A	-
16	SCREW M8 x 25	2
17	BASE	1
18	SCREW M12 x P1.75 x 100L	1
19	SET SCREW Ø1/2" x Ø23 x 2	1
20	FLAT WASHER	9
21	NUT-NYLOCK M12 x P1.75	10
22	SCREW M6 x 20	1
23	CENTER INDICATOR-SHORT	1
24	SPACER Ø6.1 x Ø10 x 8	1
25	BEARING 6201-2RS	8
26	HOOP	4
27	ECCENTRIC SHAFT	2
28	WHEEL AXLE	2
29	SUN WASHER M12	4
30	BUBBLE LEVEL	1
31	BULL'S EYE LEVEL	1
32	REVERTEX PLATE	1
33	BEVEL KNOB M8 x 30	1
34	INTERNAL CIRCLIP S-15	2
35	BEARING 6002-2RS	2
36	CRANK PINION	1
37	CRADLE	1
38	CRADLE PLATE 20 x 115 x 3	1
39	CRANK BOSS	1
40	CRANK GRIP	2
41	CRANK HANDLE	1
42	LOCK SCREW M12 x P1.75	1
43	SPRING WASHER M8	4
44	SCREW M8 x 30	4
45A	CRADLE CLAMP BRACKET Ø44(OPTIONAL)	1
45B	CRADLE CLAMP BRACKET Ø68(OPTIONAL)	1
45C	CRADLE CLAMP BRACKET Ø60(OPTIONAL)	1
46	FLAT WASHER Ø8 x Ø14 x 2 (for CRADLE CLAMP BRACKET Ø44)	1
47	LOCK SCREW M12(for CRADLE CLAMP BRACKET Ø68, Ø60)	1
48	WRENCH 17 x 19	1
49	N/A	-
50	LOCK SCREW M8(for CRADLE CLAMP BRACKET Ø44)	1
51	QUICKLY PLACE ASSEMBLY	1
A1	JACK SCREW (OPTIONAL)	1
A2	WHEEL ASSEMBLY(OPTIONAL)	1



# Exploded View (170mm Model)



NO.01~36 V1.0

# Parts List (170mm Model)

No.	Parts Name		QTY
1	LOCK SCREW	M12	1
2	FLAT WASHER	Ø1/2" x Ø23 x 2	1
3	CRADLE CLAMP BRACKET		1
4	EXTERNAL CIRCLIP	IS-15	2
5	BUSHING	Ø15 x Ø20 x 10	2
6	CRANK PINION		1
7	CRANK GEAR	M1.5 x 16T	1
8	ROLL PIN	Ø5 x 25	2
9	CARRIAGE		1
10	FENCE LOCK LEVER	M12 x P1.75	1
11	AXLE SHAFT		2
12	ECCENTRIC SHAFT		2
13	AXLE SPACER B	Ø12 x Ø19 x 3	4
14	BALL BEARING	6001-2RS	8
15	AXLE SPACER C	Ø12 x Ø17 x 12	4
16	GUIDE ROLLER	Ø17 x Ø36 x 28	4
17	AXLE SPACER A	Ø6.5 x Ø27 x 4	4
18	SCREW	M6 x 16	4
19	SCREW	M4 x 10	2
20	CARRIAGE LOCK LEVER		1
21	CRANK HANDLE		1
22	SCREW	M4 x 10	3
23	COLUMN CAP		1
24	COLUMN		1
25	BASE		1
26	FLAT WASHER	Ø10 x Ø23 x 2	2
27	SHOULDER BOLT	M8 x P1.25	2
28	SCREW	M12 x 55	3
29	SCREW	M8 x 35	2
30	BUTRESS BAR		1
31	NUT-NYLOCK	M8	2
32	LOCK PLATE	20 x 20 x 5 x M8	1
33	BUTRESS LOCK		1
34	ANGLE LOCK CLAMP		1
35	WRENCH	M19	1
36	SPRING WASHER	M4	2



**Unit 4/1 Rocklea Drive  
Port Melbourne Vic 3207**

**1300 109 108**

**[www.traxxcp.com.au](http://www.traxxcp.com.au)**